

PEL Measurements of ETO by GC/PID

Introduction

The photoionization detector (PID) with a gas chromatograph (GC) is specified by OSHA for detection of ethylene oxide (ETO) PEL for personnel safety. The PEL for ETO is 1 ppm and the Model 301 GC/PID can detect 1% of that value.

Features

- Very sensitive PID- detection of < 10 ppb ETO 1% of PEL
- Chromatography and special precolumn eliminate interferences from solvents as well as aftershave and perfumes which are typical interference for electrochemical sensors
- Auto zero each run (no zero drift)
- Autocal at customer settable frequency (typically once per week or monthly)
- Automatic data storage of > 1 year of data on USB drive (chromatograms & data)

Applications include:

ppb measurements of ETO in hospitals, fumigation, sterilization ..

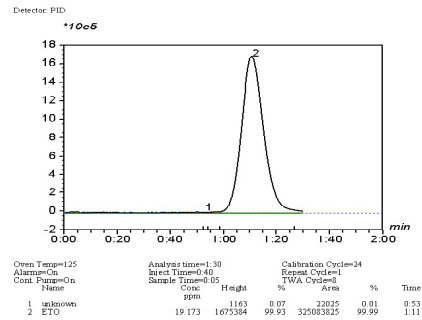
Specifications-

Analysis time- 1.30 minutes

Detection Limit: 1 ppb

Detectors: PID

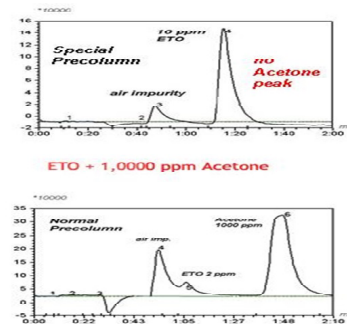
Enclosures: NEMA 4 wall or 19" rack mount



10 ppm ETO Cal Gas



Photo of 4 point ETO Analyzer



Special pre column is used to eliminate interferences

PID Analyzers, LLC
2 Washington Circle
Sandwich, MA 20563
T: 1 774 413 6281
em: sales@hnu.com
url: www.hnu.com